

Publication  
Standard  
Weather  
LOUVRES

Section 1

SEPT 2005

# Standard Weather Louvres

high performance



JC VENTS

# Std Weather Louvres

## introduction

Series OJ and OL standard louvres have been designed to provide weather protection to ventilation openings in buildings. In addition to the modular sizes shown it is possible to specify OJ and OL louvres for cladding, louvre screens, access doors and other architectural features.



## description

OJ and OL louvres are composed of frame and blade assemblies manufactured to suit the building aperture size. Different formats are available to suit aesthetic requirements: OJ with 75mm pitch and OL with 38mm pitch blades.

Frame options include flanged and recessed types. An adjustable louvre option is available for applications requiring automatic or manual closure/opening of the louvre.

## manufacture

OJ and OL louvres are manufactured from extruded aluminium sections which conform to BS1474 using material specification HE9. Frames and blades are screwed, riveted or cleated to form a robust structure.

## size convention

Louvres are conventionally specified in terms of the building aperture size, and suitable tolerances are built in before manufacture. Size should be given in terms of Width 'W' x Height 'H'

## applications

The most common application of OJ and OL louvres is to protect the supply and exhaust duct openings through the building fabric from the ingress of water. Louvres may also be used for transfer applications where free flow ventilation of rooms is required to meet building regulations.

## finishes

Standard finish stove silver Special finishes are available to suit most architectural requirements and include:

**Natural satin anodised (AA25 micron)**

**Colour Anodised**

**Polyester powder coat**

**Stoved epoxy**

**Stoved acrylic**

**Syntha Pulvin**

**PVF2**

**Primed**

**Mill**

## accessories

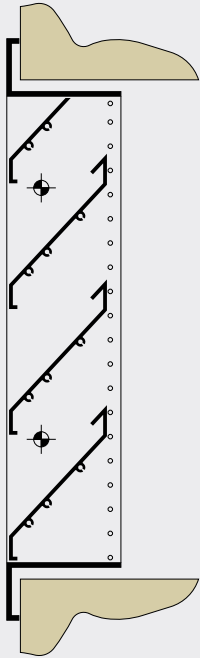
Bird or vermin guard (BS) galvanised mesh fixed to the rear of the louvre section.

Insect screen (IS) in stainless steel fixed to the rear of the louvre. Rain lip (RL) in the form of an extended bottom blade.

# OJ and OL Range overview

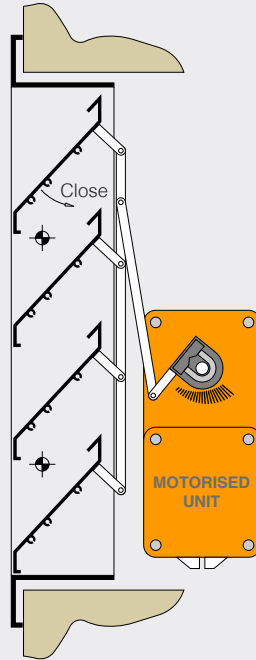
contents

## OJ - 75mm Pitch FIXED BLADE LOUVRES



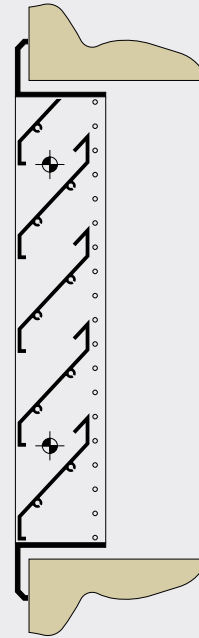
Page 4 - 5

## OJ / ADJ - 75mm Pitch ADJUSTABLE BLADE LOUVRES



Page 6 - 7

## OL - 38mm Pitch FIXED BLADE LOUVRES



Page 8 - 9

### Page 10

Sitework  
Transport  
Handling  
Installation and  
Maintenance

### Page 11

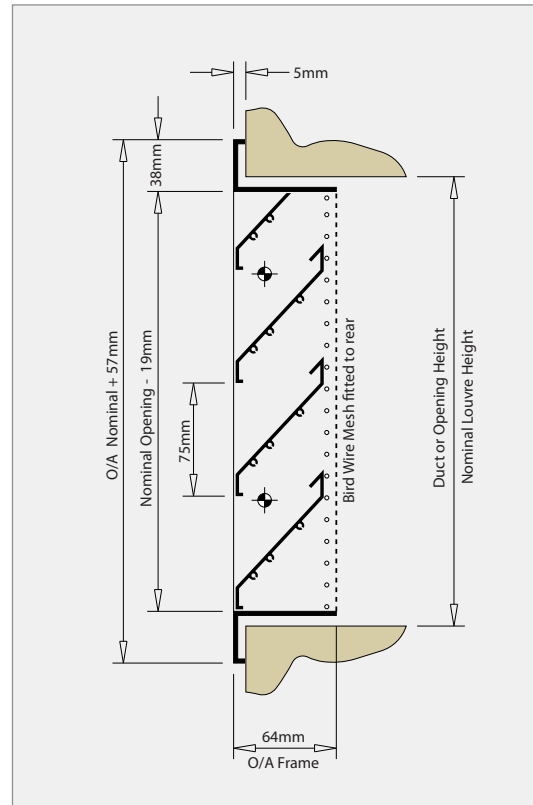
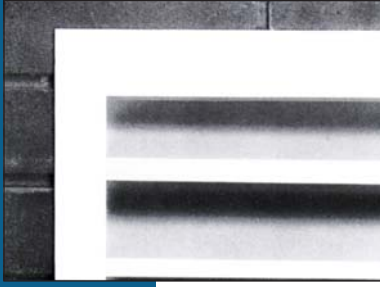
Performance data

### Back page

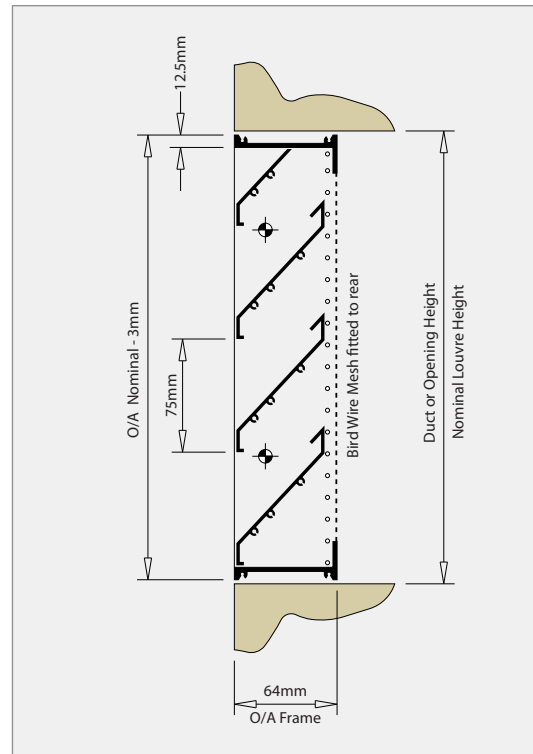
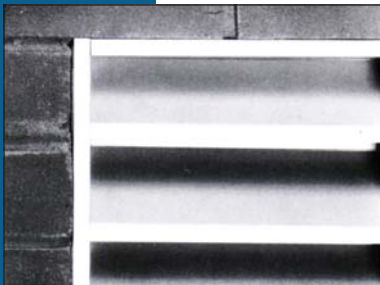
Other JC Vents  
literature

# OJ Louvre

## OJ / F flanged frame



## OJ / R recessed frame

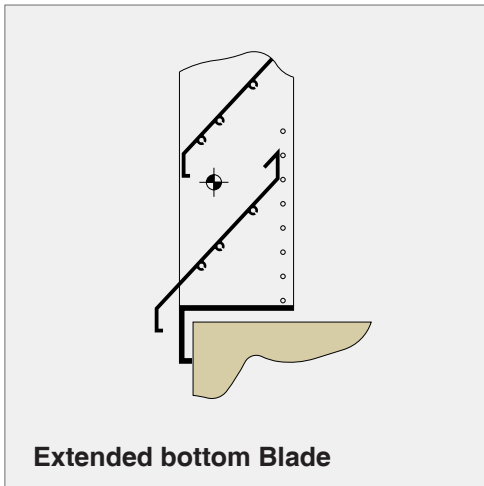


Large format, fixed blade, weather louvres with a choice of flanged or recessed frame systems. Blades are pitched at 75mm and the lower blade can be extended to form a rain lip to carry surface water away from the wall. OJ louvres are suitable for most weathering applications.

## OJ Louvre

### options

- BS = Bird Screen  
 IS = Insect Screen  
 EB = Extended bottom blade



### performance

Louvre free areas, pressure loss and general selection data are shown on page 11.

OJ louvres are manufactured to suit the building aperture sizes on a contract basis. For individual modular louvres the following ordering designation should be applied.

type	frame	accessories	fixing	size	finish
OJ	/ *	/ **	/ ***	/ *** X ***	/ F*

### frame

- F = Flanged  
 R = Recessed

### accessories

- BS = Bird Screen  
 IS = Insect Screen  
 EB = Extended Blade

### size

Width x Height (mm)  
 (Nominal opening).

### finish

- FO = Stove Silver  
 F1 = Anodised Natural  
 F2 = Anodised Colour  
 F3 = Powder Coat Colour  
 F4 = Stoved Epoxy Colour  
 F5 = Stoved Acrylic Colour  
 F6 = Syntha Pulvin  
 F7 = Primed Coat  
 F8 = Mill Finish

### fixing

- SS = Screw through Stack  
 SF = Screw through Flange  
 RL = Rear Lug  
 MT = Masonary Tie

## ordering

## legend

## sizes

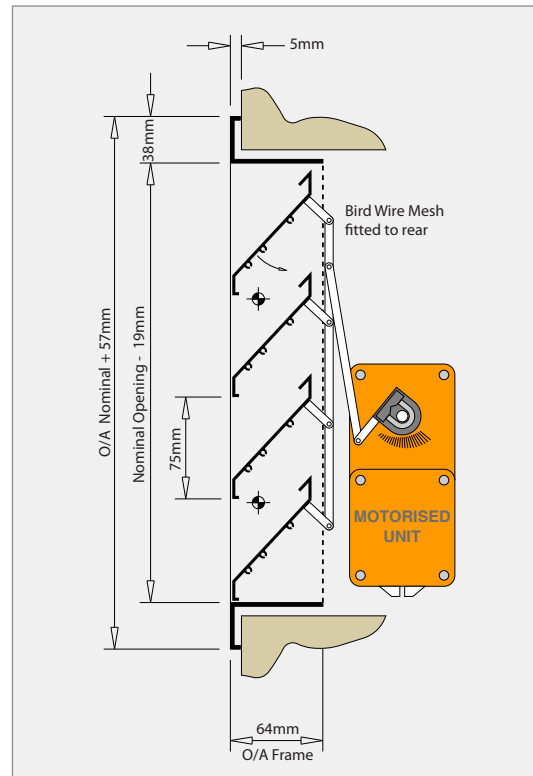
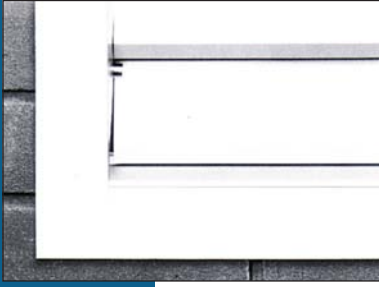
Maximum size  
 3000 X 2000

Minimum size  
 300 X 300

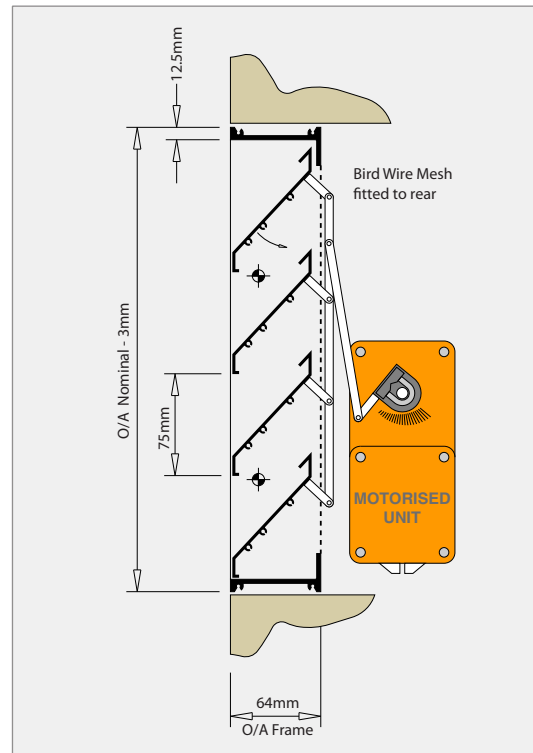
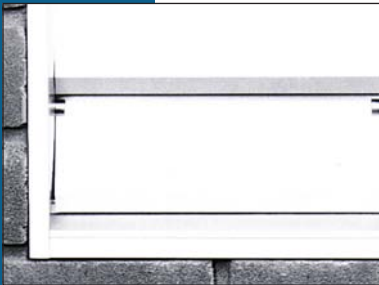
Larger sizes are available in sections.

## OJ / ADJ Louvres

### OJ / F / ADJ flanged frame



### OJ / R / ADJ recessed frame



Large format, adjustable blade, weather louvres. The blades are individually pivoted on stainless steel/nylon bearings and ganged to a rear operator. A side seal is provided at the blade ends to prevent water ingress.

Opening or closing via a manual, electrical or pneumatic actuator which is positioned to the rear of the louvre.

Adjustable louvres may be used for a variety of purposes including automatic temperature control, ventilation or smoke release.

# OJ / ADJ Louvres

## options

LO	=	Lever Operated (STD)
MLQ	=	Manual Locking Quadrnt
Motor	=	Motor Actuated
PNU	=	Pnematic Actuated
FL	=	Fusible Link
CH	=	Chain
TF	=	Tele Flex

OJ/ADJ louvres are manufactured to suit the building aperture sizes on a contract basis. For individual modular louvres the following ordering designation should be applied.

type	frame	accessories	fixing	size	finish
OJ/ADJ	/ *	/ **	/ ***	/ *** X ***	/ F *

## frame

F = Flanged  
R = Recessed

## accessories

BS	=	Bird Screen
IS	=	Insect Screen
EB	=	Extended Blade

## size

Width x Height (mm)  
(Nominal opening).

## finish

FO	=	Stove Silver
F1	=	Anodised Natural
F2	=	Anodised Colour
F3	=	Powder Coat Colour
F4	=	Stoved Epoxy Colour
F5	=	Stoved Acrylic Colour
F6	=	Syntha Pulvin
F7	=	Primed Coat
F8	=	Mill Finish

## fixing

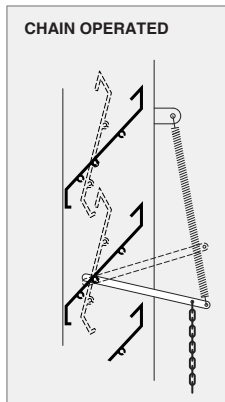
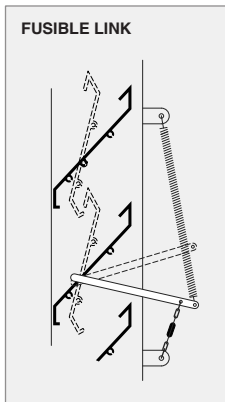
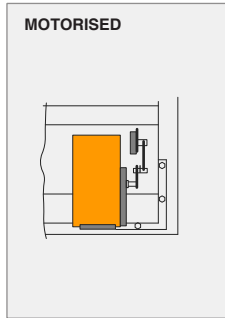
SS	=	Screw through Stack
SF	=	Screw through Flange
RL	=	Rear Lug
MT	=	Masonry Tie

## performance

Louvre free areas, pressure loss and general selection data are shown on page 11.

## ordering

## legend



## sizes

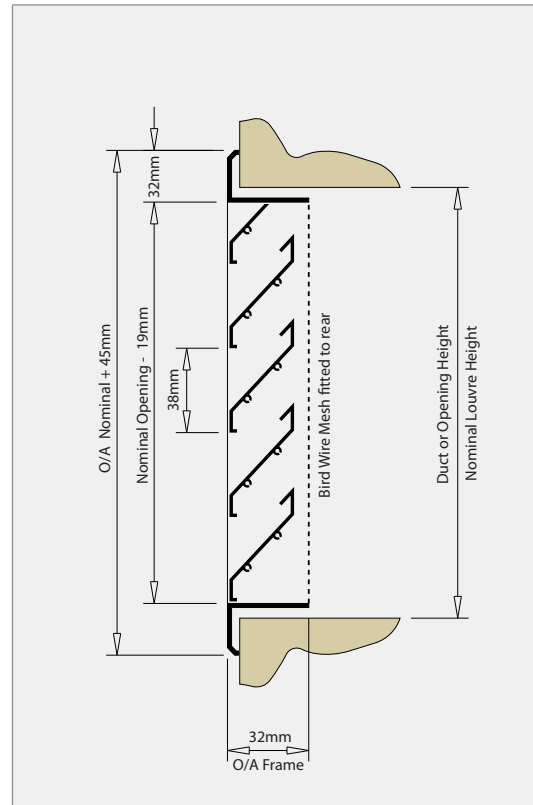
Maximum size  
1000 X 2000

Minimum size  
300 X 300

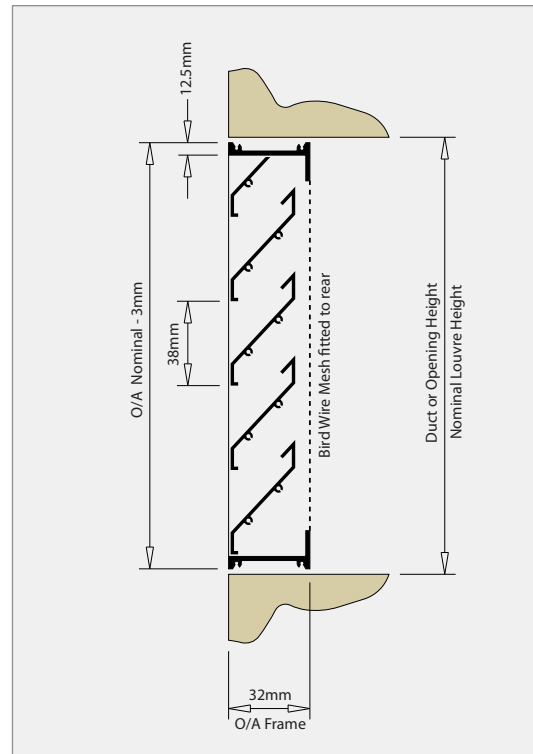
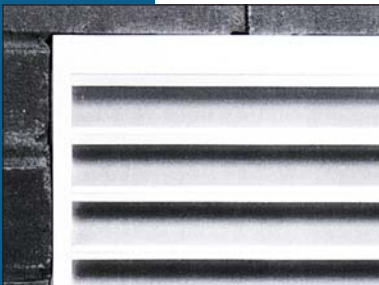
Modules can be joined on site if required to operate with a single actuator.

## OL Louvre

### OL / F flanged frame



### OL / R recessed frame



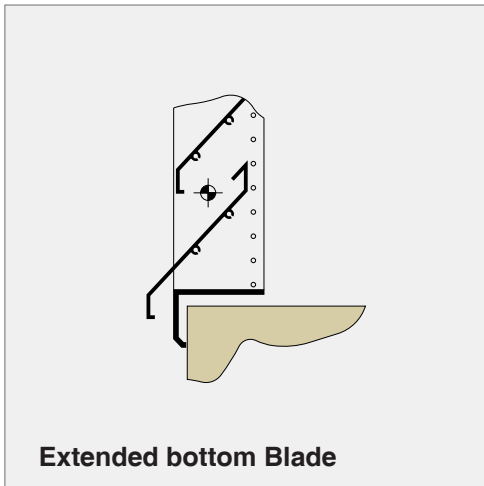
Small format, fixed blade, louvres available with a choice of flanged or recessed frames. Blades are pitched at 38mm and the bottom blade can be extended to form a rain lip. OL louvres are suitable for most light weathering applications requiring small louvres or a fine line aesthetic appearance.



## OL Louvre

### options

- BS = Bird Screen  
 IS = Insect Screen  
 EB = Extended bottom blade



### performance

Louvre free areas, pressure loss and general selection data are shown on page 11.

OL louvres are manufactured to suit the building aperture sizes on a contract basis. For individual modular louvres the following ordering designation should be applied.

type	frame	accessories	fixing	size	finish
OL	/ *	/ **	/ ***	/ *** X ***	/ F*

### frame

- F = Flanged  
 R = Recessed

### accessories

- BS = Bird Screen  
 IS = Insect Screen  
 EB = Extended Blade

### size

Width x Height (mm)  
 (Nominal opening).

### finish

- FO = Stove Silver  
 F1 = Anodised Natural  
 F2 = Anodised Colour  
 F3 = Powder Coat Colour  
 F4 = Stoved Epoxy Colour  
 F5 = Stoved Acrylic Colour  
 F6 = Syntha Pulvin  
 F7 = Primed Coat  
 F8 = Mill Finish

### fixing

- SS = Screw through Stack  
 SF = Screw through Flange  
 RL = Rear Lug  
 MT = Masonary Tie

## ordering

## legend

## sizes

Maximum size  
 1500 X 2400

Minimum size  
 300 X 300

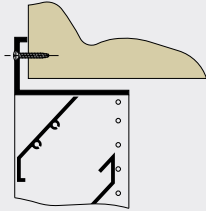
Larger sizes are available in sections.

## fixing

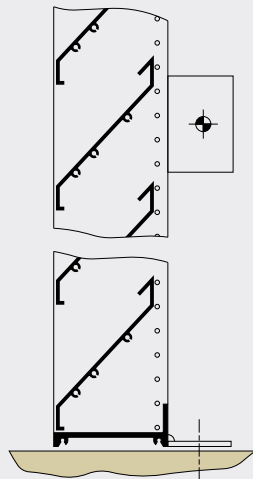
Alternative fixings including rear lugs, screw through flange, etc., which can be supplied optionally.

Standard fixing is by screw through the stack; holes drilled on site where convenient.

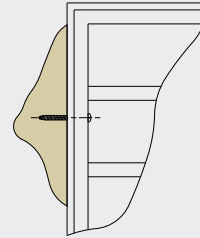
## SF - SCREW THROUGH FLANGE



## RL - REAR LUG



## SS - SCREW THROUGH STACK



## MT - MASONRY TIE



## transport and storage

OJ and OL louvres are robustly constructed but reasonable care should be taken during handling to ensure that the surface finish is not damaged.

If fitted with any form of actuator the OJ/ADJ louvre should not be subjected to continuous wetting.

## installation

Building apertures should be clean and square with a general tolerance of 3mm.

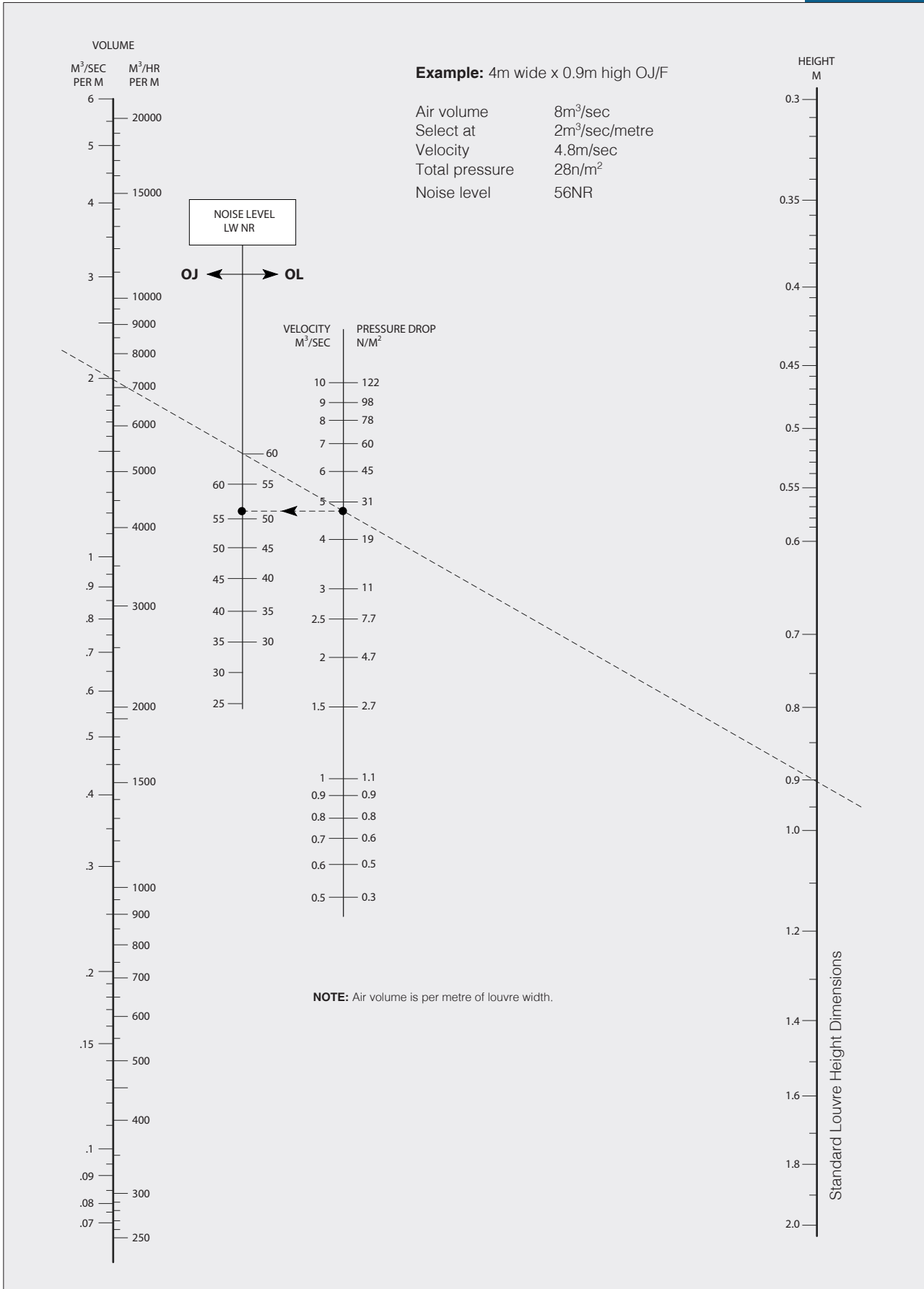
Lifting and placement is usually a two man operation and if lifting gear is used, no undue stress should be placed on individual louvre blades or frames.

## operation and maintenance

Fixed and adjustable louvres have been designed to be maintenance free when applied within our recommended guidelines. Louvre surfaces can be cleaned by wiping with water and a mild detergent.

# Louvre selection

nomogram



# Louvre programme literature

## section 1

Standard Weather Louvres

## section 2

Self Drain Louvres  
High Performance

## section 3

Penthouse / Turret Louvres



## JC VENTS

JC House,  
Hurricane Way,  
Wickford Business Park,  
Wickford,  
Essex SS11 8YB,  
UK.

Tel: 01268 561122  
Fax: 01268 560606  
email: [info@jcvents.co.uk](mailto:info@jcvents.co.uk)  
web: [www.jcvents.co.uk](http://www.jcvents.co.uk)