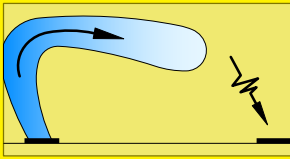


Supply and exhaust air

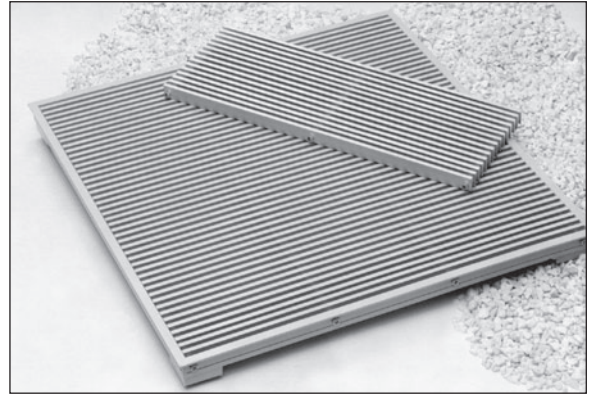
FLOOR GRILLES

introduction



The FR and F type grilles have been designed for floor supply applications experiencing normal foot loadings.

The cores incorporate steel rods within the cross tubes and the frames are welded and reinforced across the height with a heavy duty aluminium section to produce a rigid construction.



The cores are supplied as lay-in items to provide easy access for cleaning. A tile replacement floor grille is also available to suit most raised floor tile systems. Details are available on request.

type

FR / FB - F / FB

control

Opposed blade volume control damper - OB

options

For all additional available options, border styles, fixings, finishes and plenums see document **PART L**

fixings

F and FR type grilles are designed for lay-in installation, but a range of optional fixing methods are also available as detailed in **PART L**

finish

Standard finish is satin anodised aluminium - SAA

sizes

Floor grilles are available in standard heights ranging from 75mm up to 300mm and in single section lengths up to 3m, depending on the height. Heights greater than 300mm can be supplied, but additional structural supports should be provided by the installer to maintain rigidity.

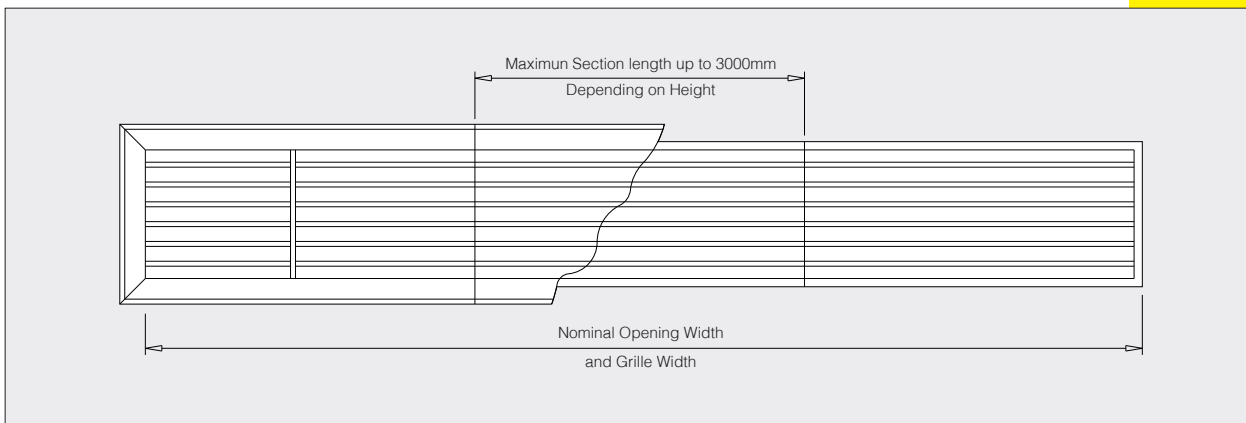
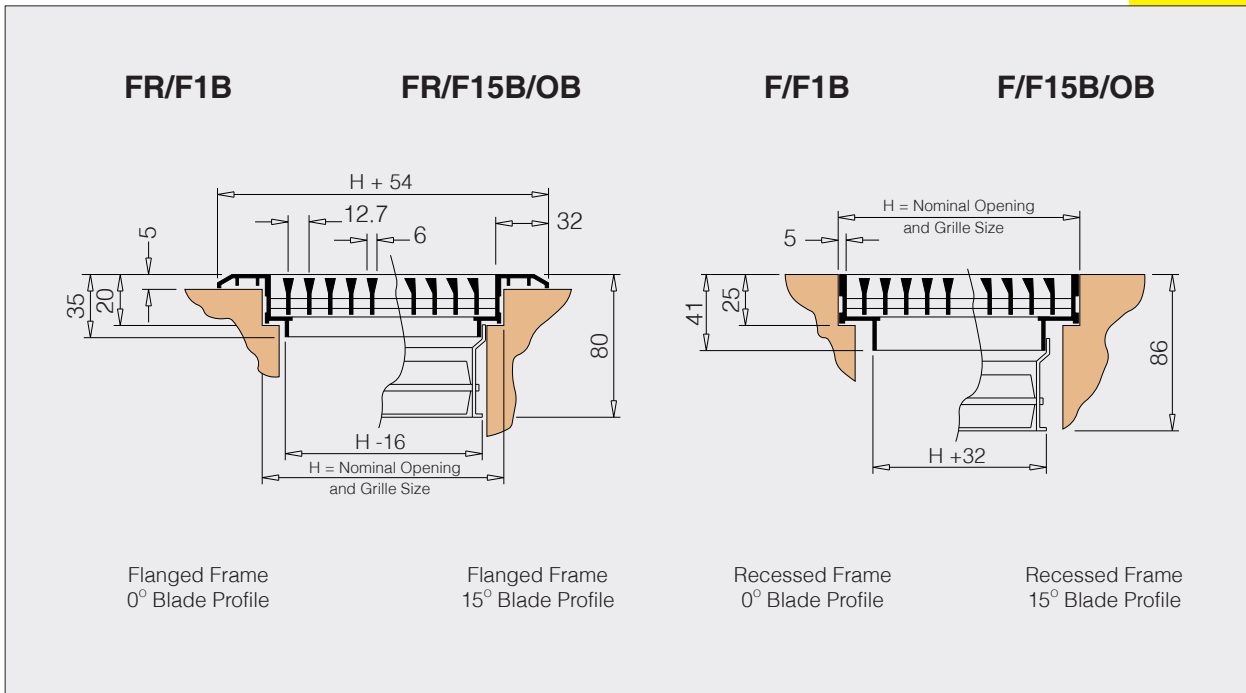
ordering details

example:

type	control	fixing	finish	width	height	quantity
FR / F1B	/ OB	/ SC	/ SAA	/ 2000	/ 100	/ 6

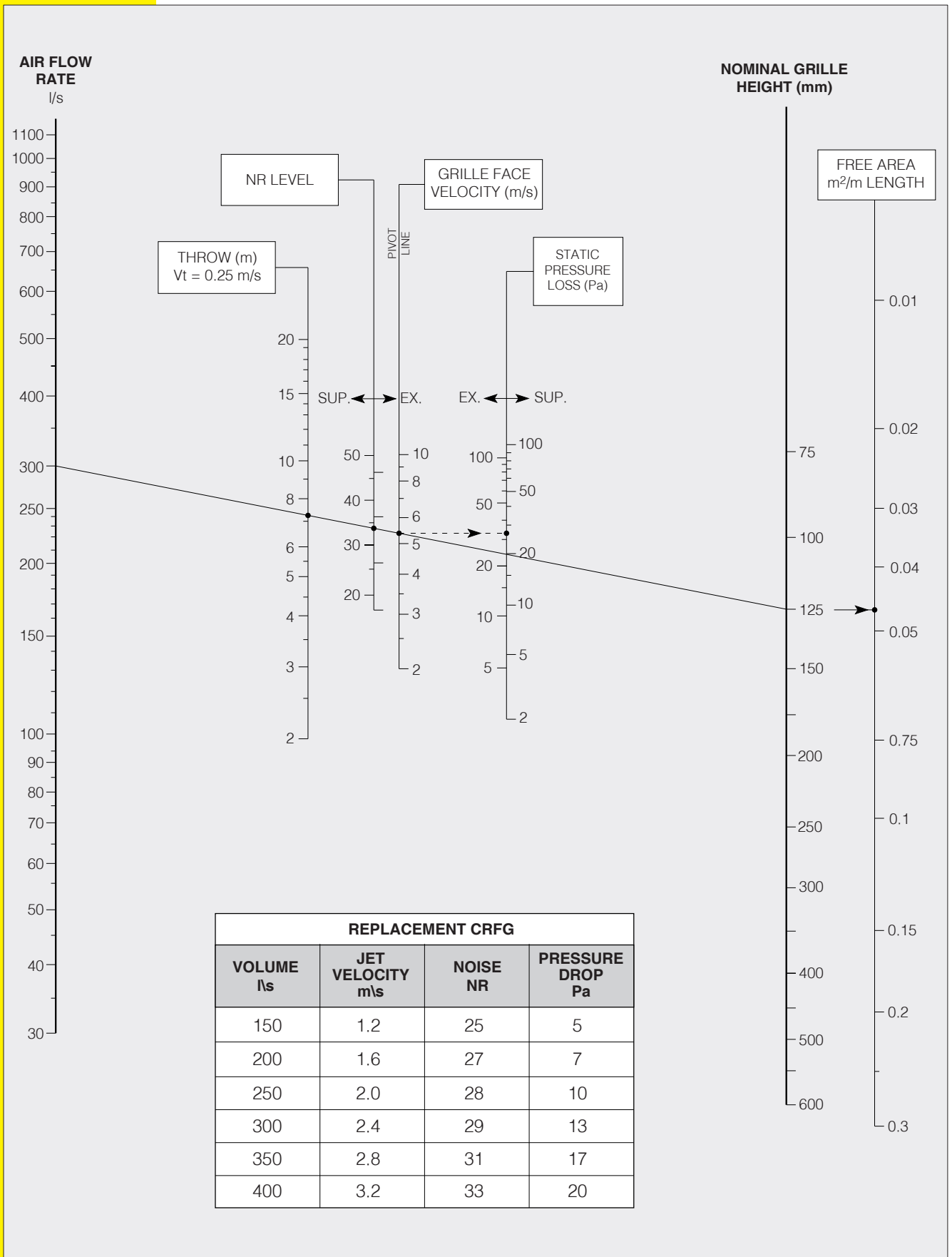
Supply and exhaust air

DIMENSIONS



Supply and exhaust air

SELECTION NOMOGRAM



Supply and exhaust air

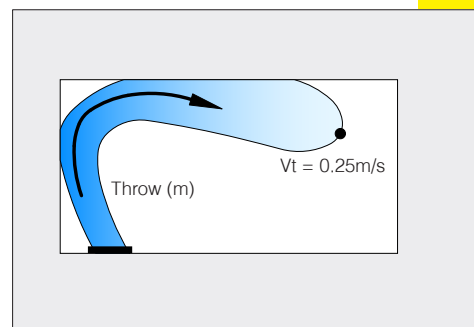
BASIS OF DATA

Throw data is for a 1.2m grille positioned within 250mm of an adjacent surface and is based on isothermal conditions to a terminal velocity (V_t) of 0.25m/s. For mounting distances greater than this, reduce the throws by a factor of 0.7.

Additional factors can be applied for other temperature differentials.

Acoustic data is presented in terms of NR levels based on a room absorption factor of 8dB.

correction factors



CORRECTION FACTORS FOR GRILLE LENGTHS				
LENGTH (m)	0.5	2.0	2.5	3.0+
THROW CORRECTION	0.9	1.0	1.1	1.1
NR CORRECTION	-3	+2	+3	+5

TEMPERATURE CORRECTION FACTORS		
TEMPERATURE DIFFERENTIAL	-10	+10
THROW FACTOR	0.9	1.1

example

SELECTION EXAMPLE				
1200mm WIDE GRILLE 125mm HIGH, PASSING AN AIR FLOW RATE OF 300l/s/m (360 l/s total)		THROW (m)	NR	Ps (Pa)
	SUPPLY	7.3	3.4	27
	EXHAUST	---	37	32