

introduction

To compliment the range of air handling grilles and diffusers a full range of brass, aluminium and steel mesh grilles have been introduced.

description

Handmade, woven and punched meshes are manufactured to suit designers requirements, standard brass angle, tee; and channel frames plus various inhouse fabricated frames are available for recessed, flanged, or rebated installations.

size

Apertures are conventionally specified in terms of nominal width (W) x height (H). Maximum panel sizes vary, dependent upon which mesh design is chosen, modular sections are available to create large area requirements. If overall sizes are required, please denote by o/a.

applications

For use with natural, convected or forced ventilation supply or extract. These meshes can be specified to cloak apertures or enhance design schemes.

finishes

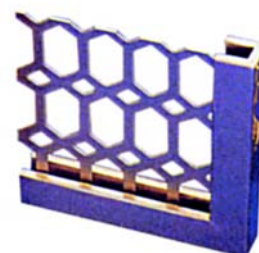
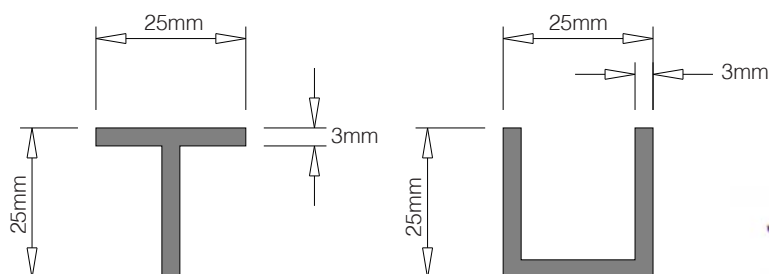
Solid brass.

Solid brass and clear stove lacquer.

Aluminium/powder coated, stove enamelled and anodised.

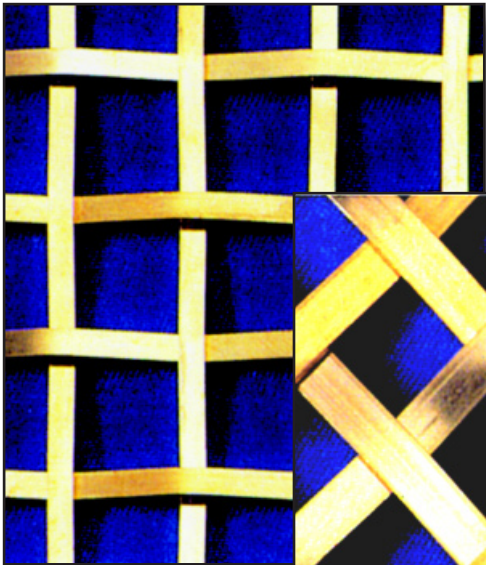
Mild steel/powder coated, stove enamelled etc.

frames

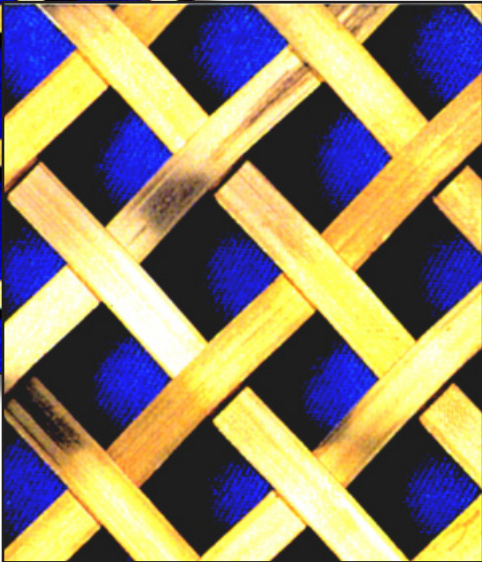


Perforated and Woven Mesh Grilles

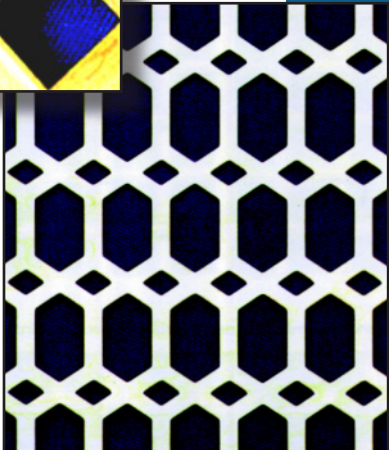
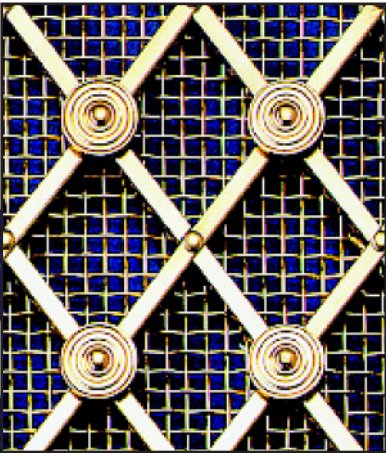
Square woven Brass Mesh



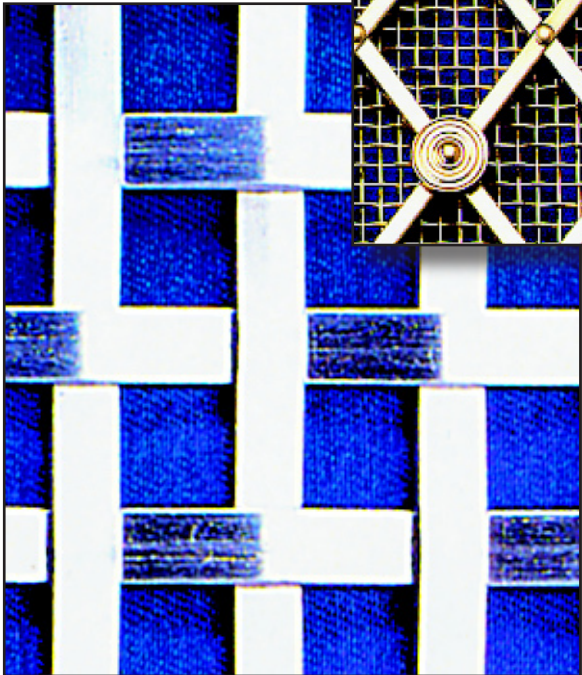
Diamond woven Brass Mesh



Small Diamond Regency Brass Mesh



Perforated Aluminium Plate



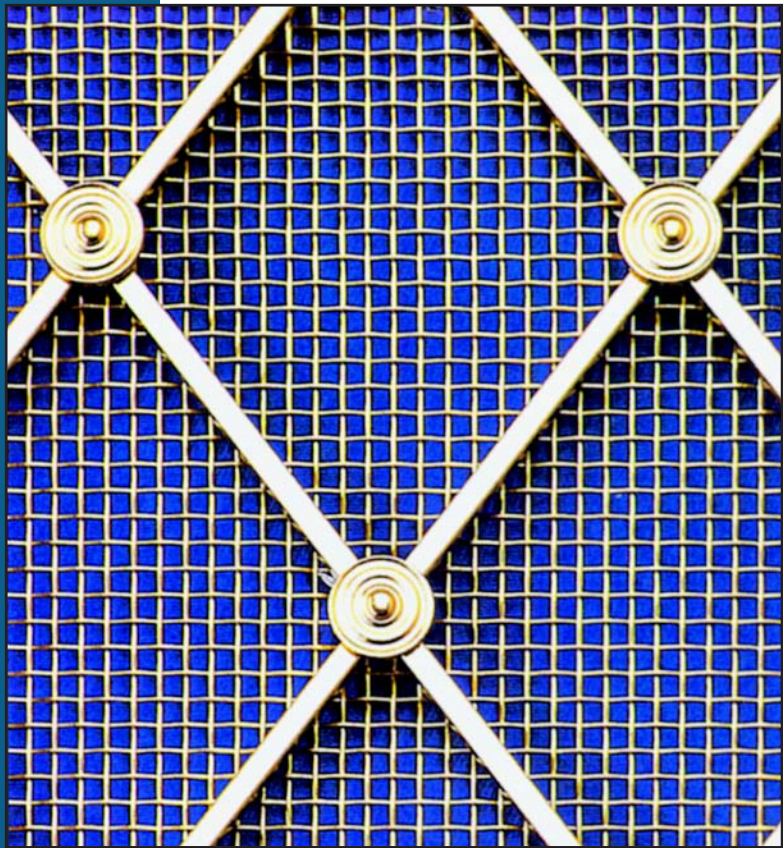
Square woven Aluminium Mesh

Large Diamond Regency Mesh Grilles

description

Large Diamond regency grilles are Manufactured from 3mm square brass wire with halved and rivetted joints.

The joints can be plain, riveted or fitted with floral or reeded rosettes which can be fitted to alternate joints or to each joint.



LDR/RF/M

54% FREE AREA

type

LDR

options

Frame:	T	=	25x25 T
	U	=	25x25 Channel
Rivet:	P	=	Plain rivet
	U	=	Floral rosette
	R	=	Reeded rosette
Position:	H	=	Half
	F	=	Full
Mesh:	M	=	Mesh

A fine backing mesh can be fitted if required.

ordering details

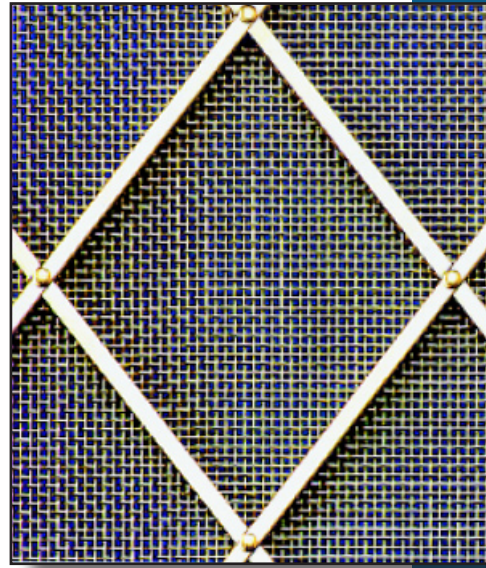
example:

type	frame	rivet	position	mesh	size W & H	quantity
LDR	T	P	F	M	300 x 300	2

Large Diamond Regency Mesh Grilles

LDR/PF/M

54% FREE AREA



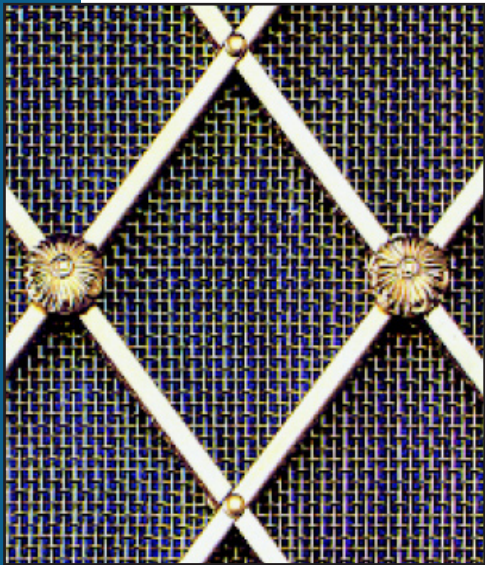
LDR/UH

83% FREE AREA



Medium Diamond Regency Mesh Grilles

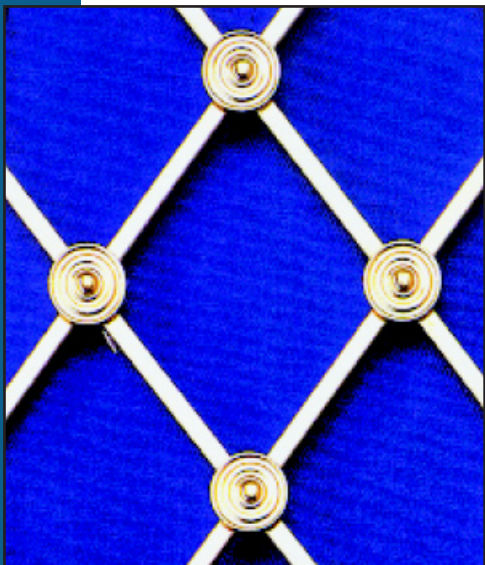
description



MDR/UH/M

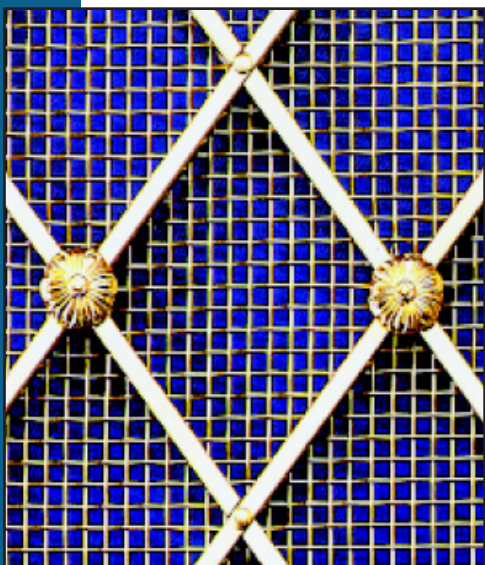
54% FREE AREA

Medium diamond regency grilles are manufactured from 3mm square brass wire with halved and riveted joints. The joints can be plain riveted or fitted with floral or reeded rosettes which can be fitted to alternate joints or to each joint. A fine or large backing mesh may be fitted if required.



MDR/RF

80% FREE AREA



MDR/UH/LM

54% FREE AREA

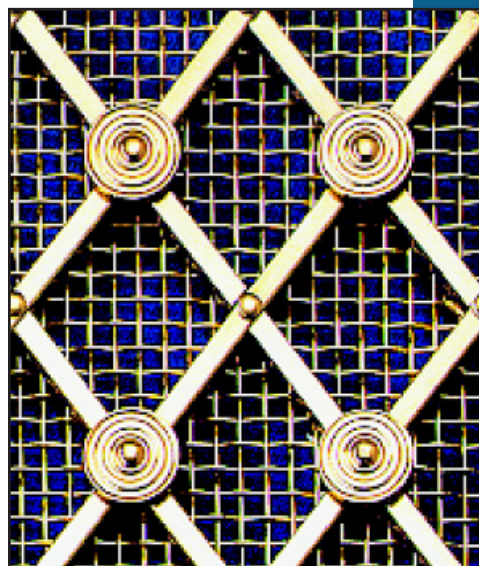
Small Diamond Regency Mesh Grilles

description

SDR/RH/M

54% FREE AREA

Small diamond regency grilles are manufactured from 3mm square brass wire with halved and riveted joints. The joints can be plain riveted or fitted with floral or reeded rosettes which can be fitted to alternate joints or to every joint. A fine or large backing mesh may be fitted if required.



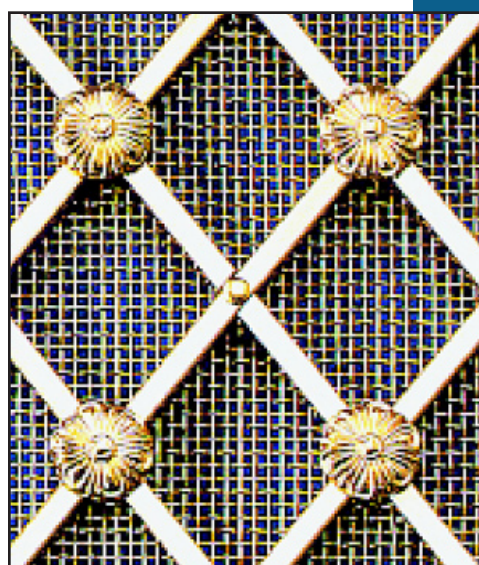
SDR/UF

65% FREE AREA



SDR/UH/M

42% FREE AREA



Perforated Brass Grilles

description



Small Club

42% FREE AREA

Perforated sheet from 0.7mm sheet brass and sold in 1800 x 900mm sheets or cut to size.

Brass perforated punched sheet (0.7mm)
Maximum sheet size 1800x900mm (in one panel)

Perforated Brass Grilles

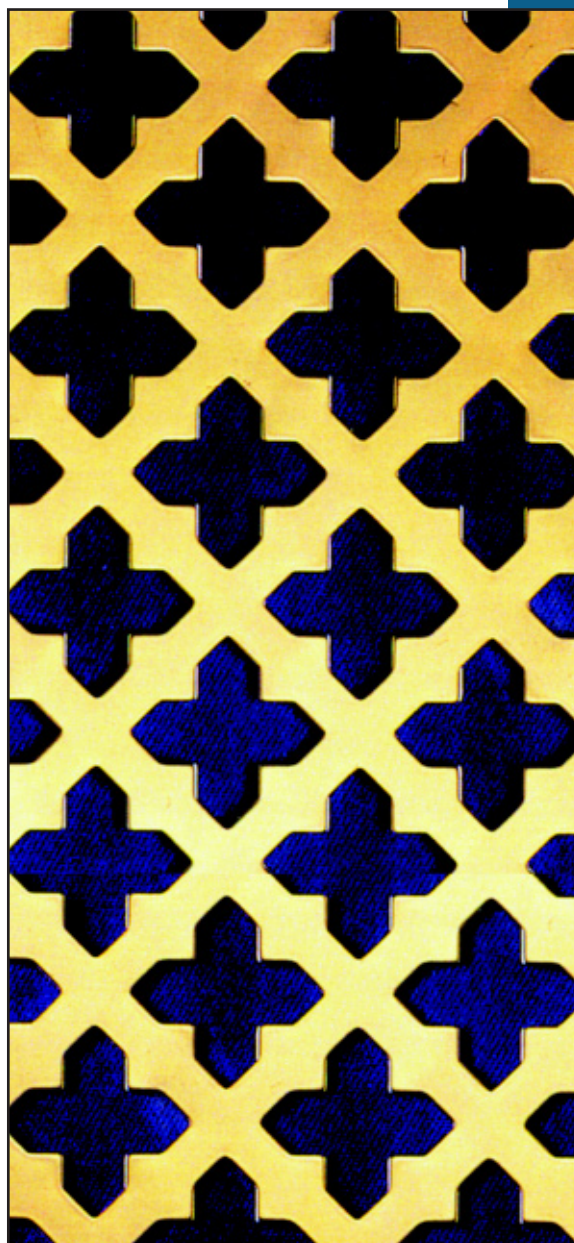
description

Large Church

55% FREE AREA

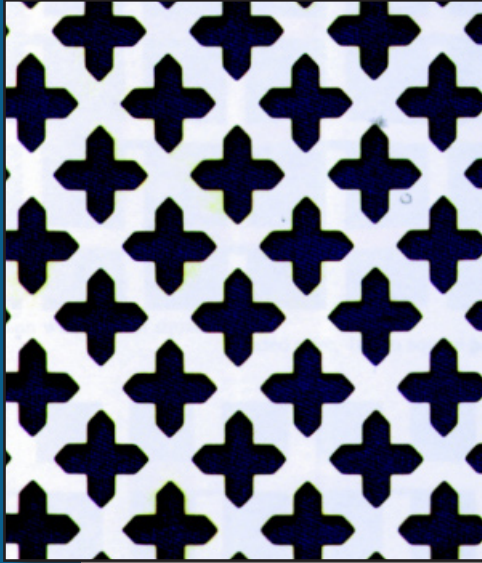
Perforated sheet from 0.7mm sheet brass and sold in 1800 x 900mm sheets or cut to size.

Brass perforated punched sheet (0.7mm)
Maximum sheet size 1800x900mm (in one panel)



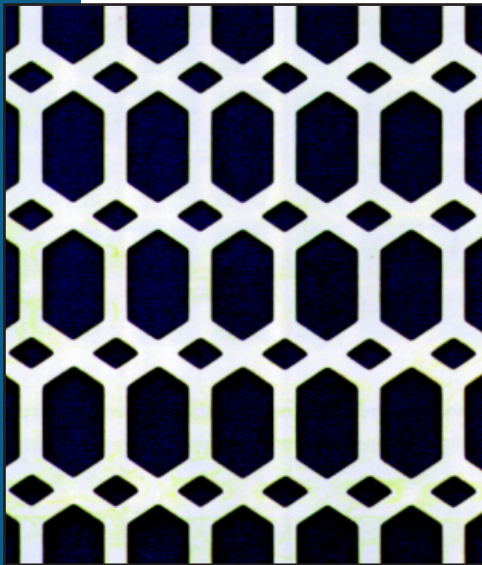
Perforated Aluminium Grilles

description



Small Church

45% FREE AREA



Slot and Diamond

60% FREE AREA

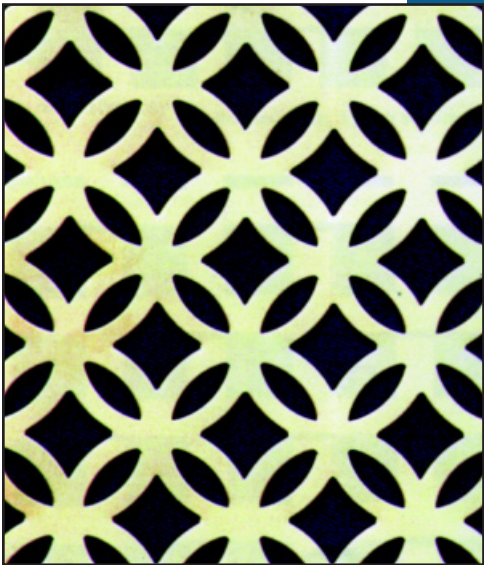
Perforated Brass Grilles

description

Large Club
55% FREE AREA

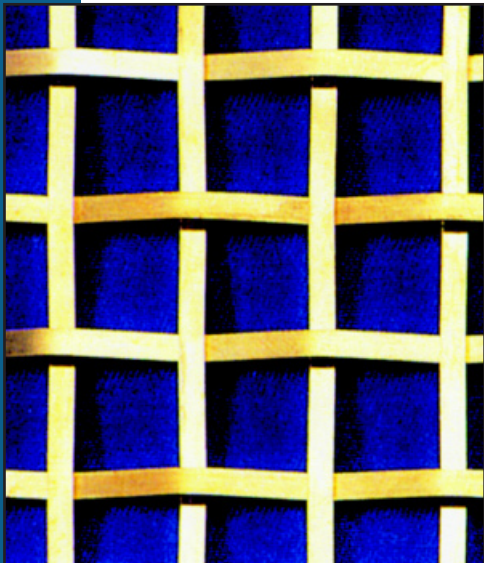


Ring and Square
45% FREE AREA



Square Woven Mesh Grilles

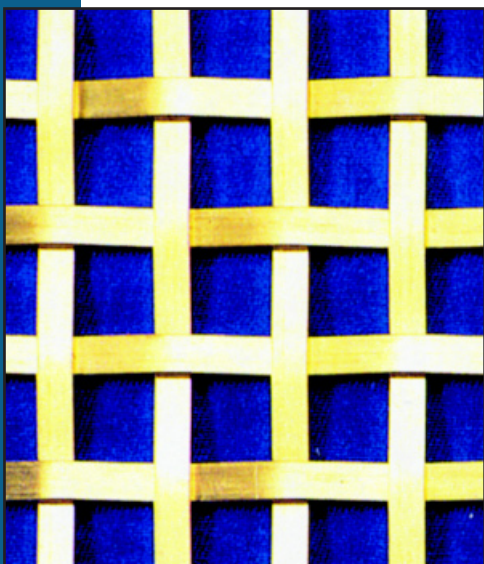
description



BP 12S 3

64% FREE AREA

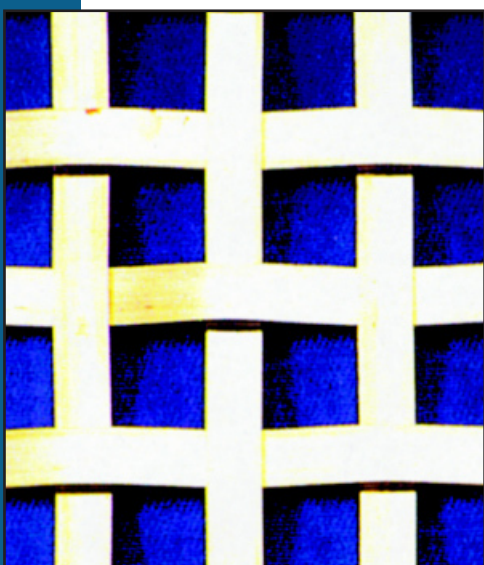
Plain wire, 12mm square
3mm Brass wire.



BP 10S 5

47% FREE AREA

Plain wire, 10mm square
4.5mm Brass wire.



BP 10S 6

39% FREE AREA

Plain wire, 10mm square
6mm Brass wire.

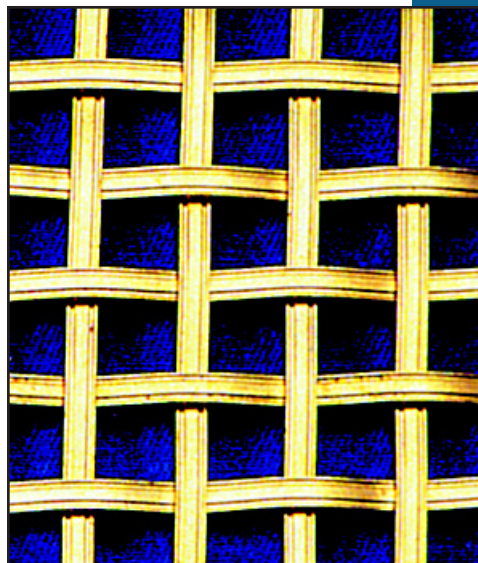
Square Woven Mesh Grilles

description

BR 10S 3

59% FREE AREA

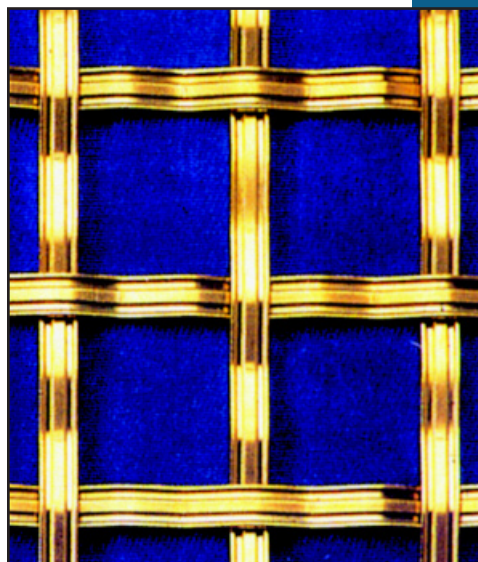
Reeded wire, 10mm square
3mm Brass wire.



BR 19S 5

65% FREE AREA

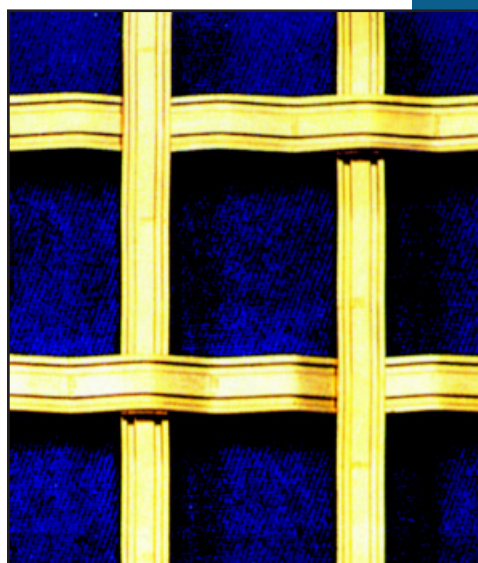
Reeded wire, 19mm square
4.5mm Brass wire.



BR 25S 6

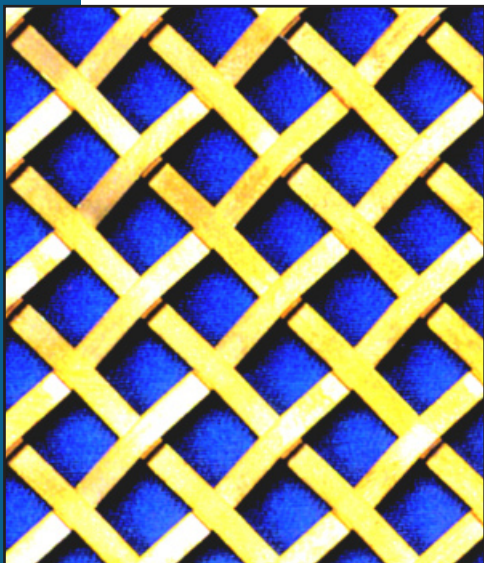
65% FREE AREA

Reeded wire, 25mm square
6mm Brass wire.



Diamond Woven Mesh Grilles

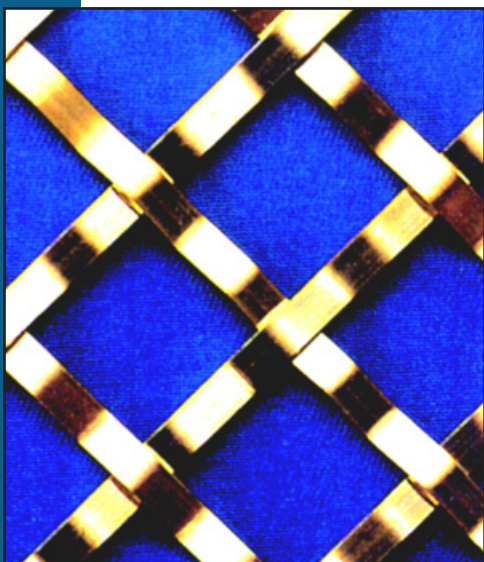
description



BP 6D 3

44% FREE AREA

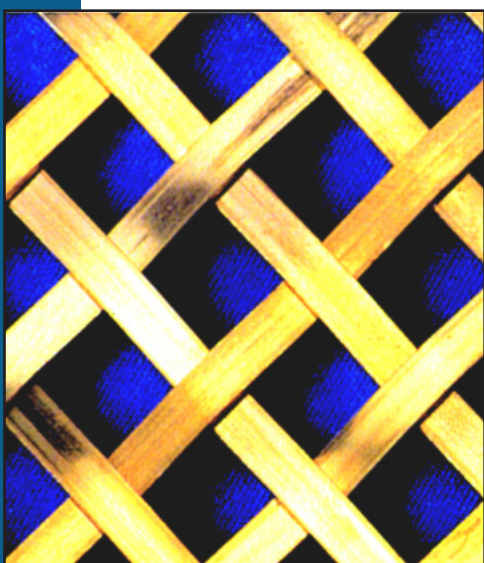
Plain wire, 6mm square
3mm Brass wire.



BP 19D 5

65% FREE AREA

Plain wire, 19mm square
4.5mm Brass wire.



BP 12D 6

44% FREE AREA

Plain wire, 12mm square
6mm Brass wire.

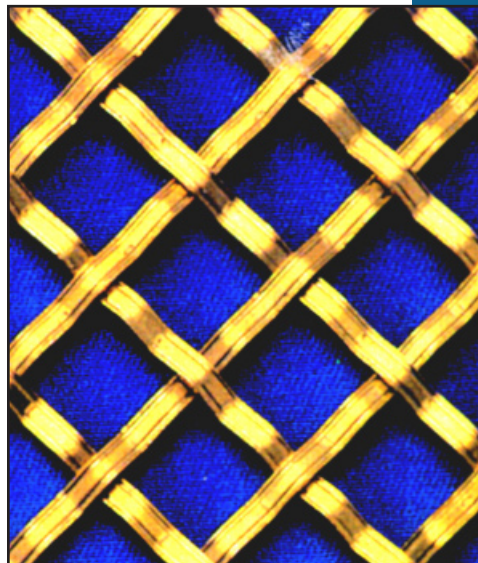
Diamond Woven Mesh Grilles

description

BR 12D 3

64% FREE AREA

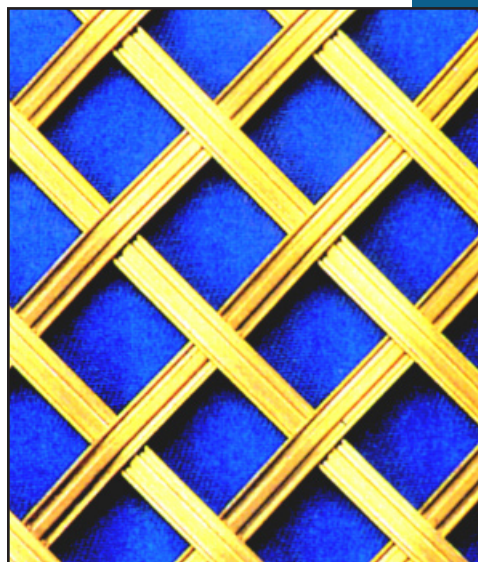
Reeded wire, 12mm square
3mm Brass wire.



BR 12D 5

53% FREE AREA

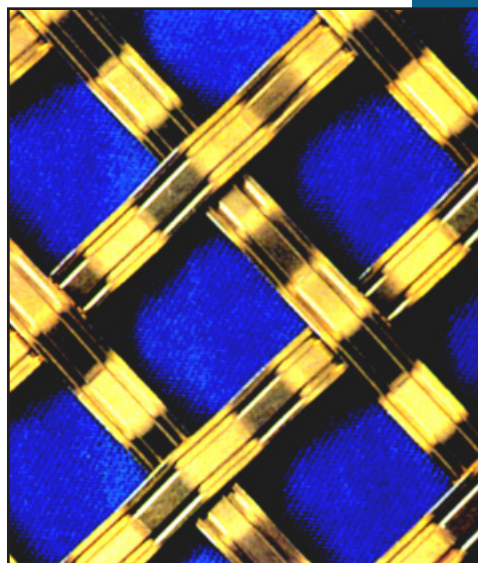
Reeded wire, 12mm square
4.5mm Brass wire.



BR 19D 6

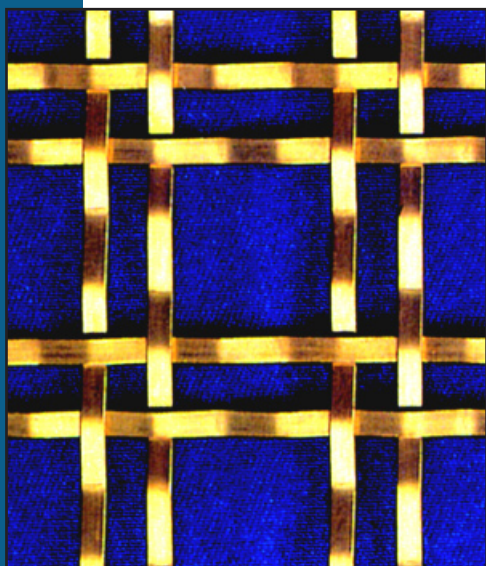
58% FREE AREA

Reeded wire, 19mm square
6mm Brass wire.



Variation of Woven Mesh Grilles

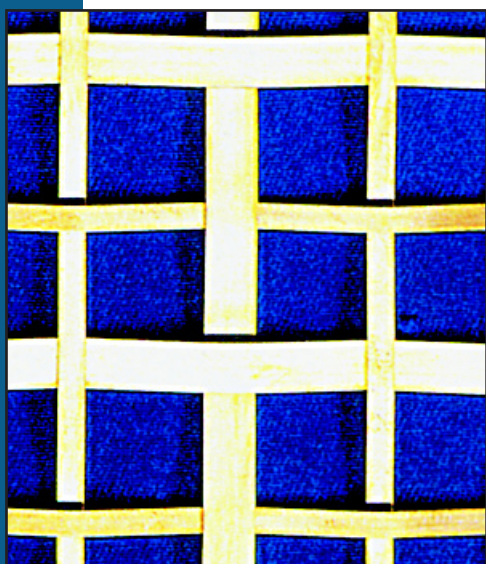
description



BP 19S 3

58% FREE AREA

Plain wire, 19mm square double weave
3mm Brass wire.



BP S 63

53% FREE AREA

Plain wire, alternate double weave
3mm and 6mm Brass wire.



BP RW 3

43% FREE AREA

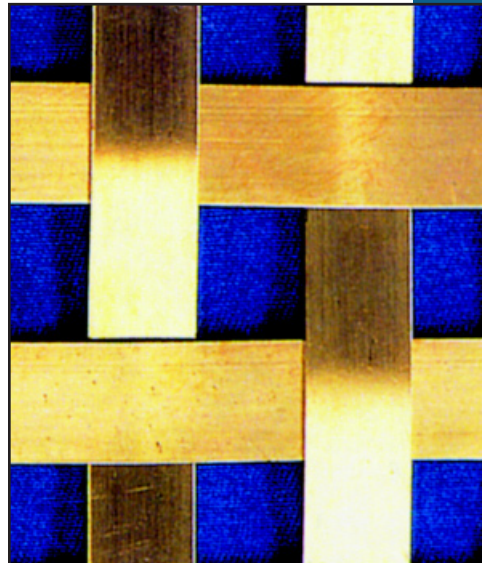
Plain wire, rectangular weave
3mm Brass wire.

Variation of Woven Mesh Grilles

BP 12S 12

25% FREE AREA

Plain wire, 12mm square
12mm Brass wire.



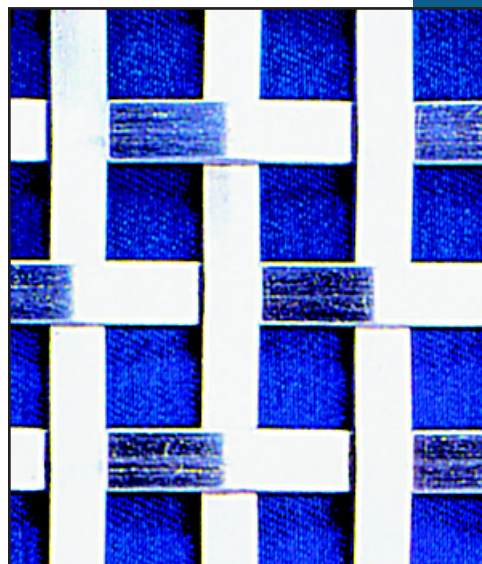
description

Aluminium Woven Mesh Grilles

AP 10S 6

39% FREE AREA

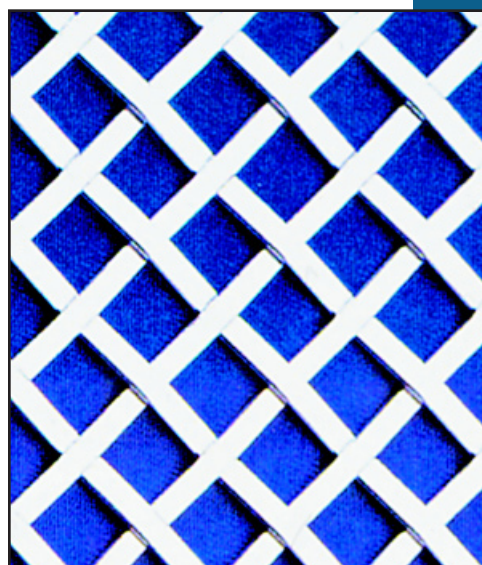
Plain wire, 10mm square
6mm Aluminium wire.



AP 8D 3

53% FREE AREA

Plain wire, 8mm diamond
3mm Aluminium wire.



JC VENTS